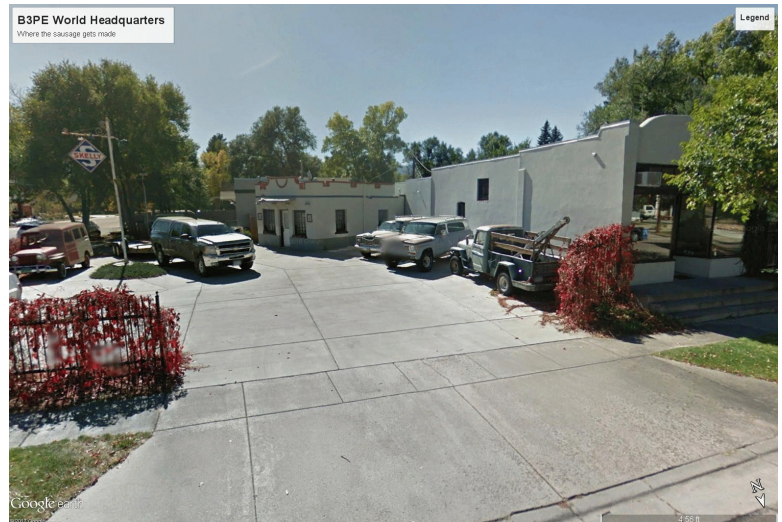




# B3PE Training Courses

B3PE offers yearly training on our software at our facilities in Colorado Springs, Colorado. The information below is intended to help prospective students plan to attend a course.

**Location:** 419 East Columbia Street  
Colorado Springs, Colorado, 80907  
USA  
(719) 578-9391



**Directions:** From I-25, take Exit 143 (Uintah Street). Turn east on Uintah and travel approximately 0.8 miles to Wahsatch Street. Turn left (north) on Wahsatch and travel 2 blocks to Columbia Street. Turn right on Columbia. Our office will be on your right at the end of the block (at the southwest corner of the intersection of Columbia and Corona Streets), in an old “neighborhood commercial center” which once included a grocery store (the office), a service/gas station (the training room), and an automotive repair shop (the stress relief area). Parking is available in our lot (the one with the SKELLY sign) or along the street. The main entrance is on Columbia (the building with the big glass window in front).

**\*\*For directions from points east of downtown Colorado Springs, contact the office.\*\***

**Duration:** Courses are scheduled for 2-3 days in length, generally from Wednesday through Friday. Start time is 8:30 AM on each day. Due to the hands-on nature of the courses, end times may vary depending on the number of students in each course, differences in experience with the software, the number of questions raised during each session. We aim to finish by 4:00 PM on Wednesdays and Thursdays, with Fridays typically being a half-day ending as early as 12 noon, sometimes as late as 3:00 PM. The last day is generally reserved for addressing specific questions and examples brought by students. If you have a flight to catch on Friday afternoon, feel free to leave early if needed.

**Attire:** Business casual. Wear something comfortable as you will be sitting in a classroom for up to 8 hours per day.

**Supplies:** Computers, training software, and documentation will be provided.

**Meals:** Lunch is provided, along with morning and afternoon snacks and refreshments. Please let us know in advance if you have any dietary guidelines or restrictions that we need to accommodate. Students are responsible for other meals.

**Smoking:** There is no smoking inside our buildings, smokers can be accommodated outside the facility.

**Lodging:** Students are responsible for arranging their own lodging. Below are some nearby lodging options. This is by no means a complete list of lodging options in the Colorado Springs area. Check the internet and other resources (AirBnB, for example) for more accommodations in and around the Colorado Springs area.

The Antlers Hotel (Wyndham) - A four-star hotel located 1.8 miles from our location. Check their [website](#) for rates and amenities.

Mining Exchange Hotel (Wyndham) - A four-star hotel located 1.7 miles from our location. Check their [website](#) for rates and amenities.

Hilton Garden Inn Downtown - A three-star hotel located about 1.8 miles from our location. Check their [website](#) for rates and amenities.

Holiday Inn Express & Suites - A two-star hotel located about 2.1 miles from our location. Check their [website](#) for rates and amenities.

The St Mary's Inn - A bed and breakfast located 1.0 mile from our location. Check their [website](#) for rates and amenities.

**Travel:** [Colorado Springs Municipal Airport](#) (COS) is the nearest airport to our location, approximately 20-25 minutes from our office by car. It is a smaller airport served by a limited number of airlines (American, Delta, Frontier, and United; Southwest is scheduled to begin service in March 2021) and routes. Approximately 70 miles to the north, [Denver International Airport](#) (DEN) is a much larger hub, with shuttle options available to transport commuters to and from Colorado Springs. Commute times between Colorado Springs and DIA can vary anywhere from 1.5 to 2.5 hours, depending on traffic (there is significant construction on I-25 between Denver and Colorado Springs that can impact travel times). If not planning on renting a car, ride-sharing services (Uber/Lyft) are available in Colorado Springs. Public transportation in our area is limited.

As a general guideline, if flying out of Denver, plan on leaving Colorado Springs at least 3.5 hours prior to your flight departure time. If using the Colorado Springs airport, plan on leaving our facility at least 2 hours prior to your flight departure time.

**\*\*Please do not make travel arrangements until your registration has been confirmed.\*\***